



General Series

General Series Valve Regulated Lead Acid batteries are designed with AGM (Absorbent Glass Mat) technology, high performance plates and electrolyte to gain extra power output for common power backup system applications widely used in the field of UPS, Emergency Lighting System.

Application

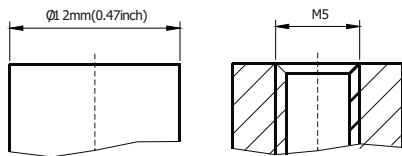
- Alarm System
- Cable Television
- Communication Equipment
- Control Equipment
- Security System
- Medical Equipment
- UPS
- Power tools
- Emergency Power System
- Toys

General Features

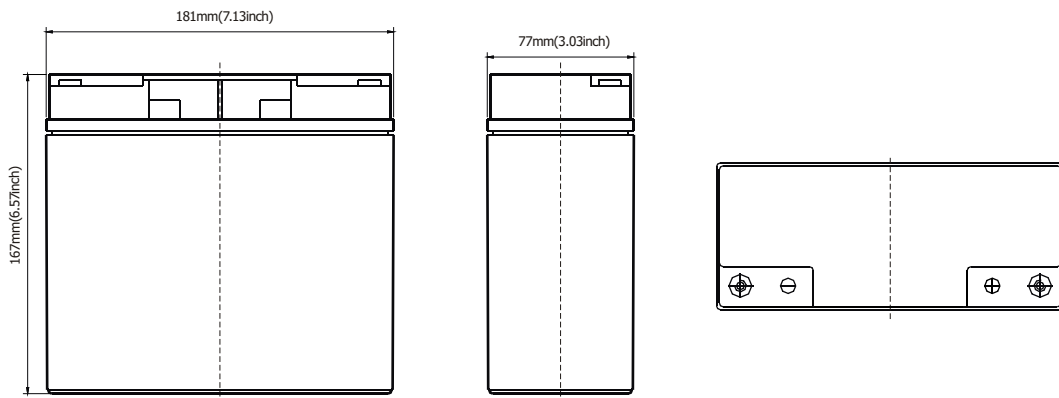
- Sealed and maintenance free operation.
- Non-Spillable construction design.
- ABS containers and covers(UL94HB, UL94V-0) optional.
- Safety valve installation for explosion proof.
- High quality and high reliability.
- Exceptional deep discharge recovery performance.
- Low self discharge characteristic.
- Flexibility design for multiple install positions.

Construction

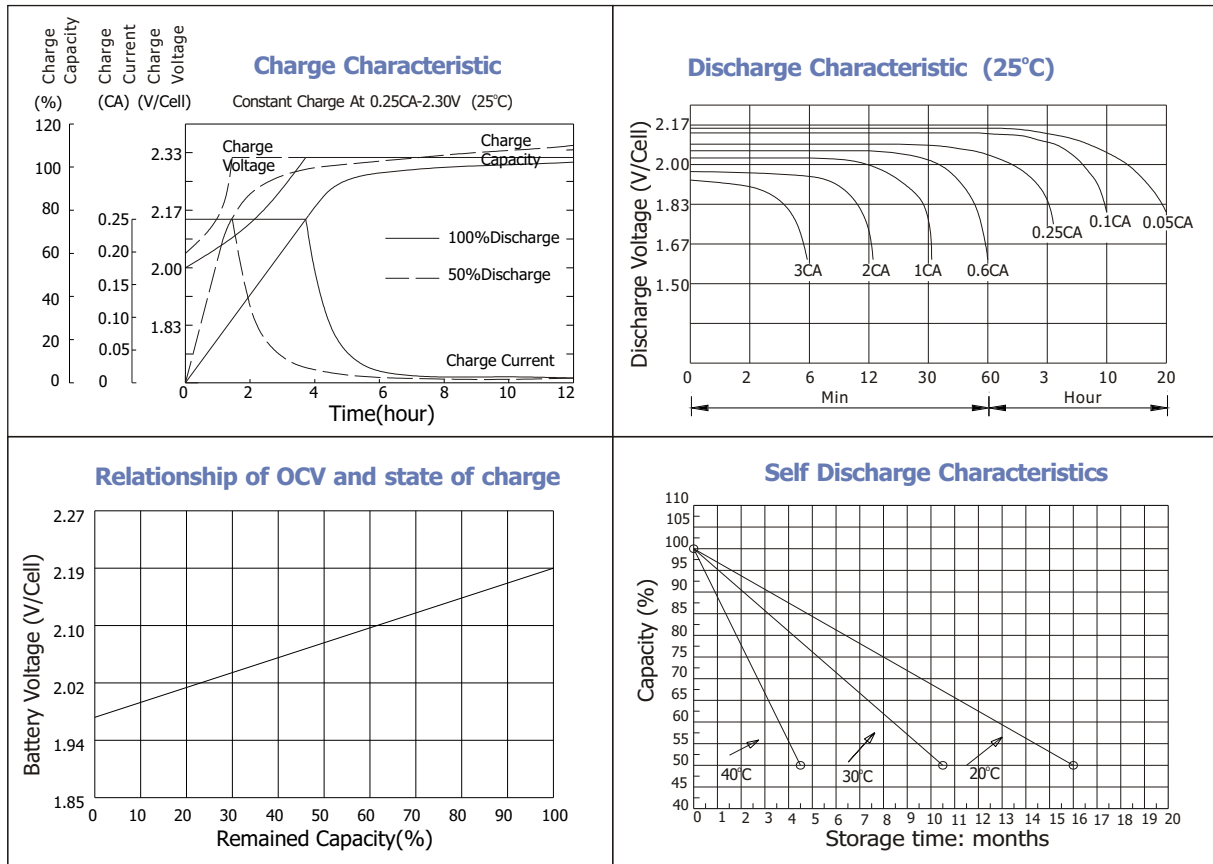
- ComponentRaw material
- PositiveLead dioxide
- NegativeLead
- ContainerABS
- CoverABS
- SealantEpoxy Resin
- Safety valveEPDR
- TerminalCopper
- SeparatorFiber glass
- ElectrolyteSulfuric acid



Terminal Dimensions



Battery Model	HC12-18			
Designed Floating Life	5 Years			
Capacity(25°C)	20HR(0.9A,1.75V)	10HR(1.67A,1.75V)	5HR(3A,1.75V)	1HR(10.8A,1.75V)
	18AH	16.7AH	15AH	10.8AH
Dimensions	Length	Width	Height	Total Height
	181mm(7.13inch)	77mm(3.03inch)	167mm(6.57inch)	167mm(6.57inch)
Approx. Weight	5.31Kg (11.71lbs)			
Internal Resistance	Full charged at 25°C: 0.017Ω			
Self Discharge	3% of capacity declined per month at (25°C)			
Capacity Affected by Temp.(20HR)	40°C	25°C	0°C	-15°C
	102%	100%	85%	65%
Charge Voltage(25°C)	Cycle use		Float use	
	14.4-15V(-30mV/ °C), max. Current: 5.4A		13.6-13.8V(-20mV/ °C)	



Constant current discharge ratings-amperes at 25°C - (Valores medios después de 5 ciclos)

F. V/Time	5MIN	10MIN	15MIN	30MIN	1H	3H	5H	10H	20H
1.60V	68.4	42.5	32.1	19.3	11.8	4.61	3.06	1.72	0.97
1.67V	64.2	40.3	30.9	18.5	11.4	4.58	3.04	1.71	0.94
1.70V	58.8	38.9	30.1	16.8	11.0	4.55	3.02	1.70	0.92
1.75V	57.6	37.7	29.2	16.0	10.8	4.50	3.00	1.67	0.90
1.80V	51.6	36.0	26.5	14.8	10.4	4.42	3.03	1.65	0.87
1.85V	45.5	34.3	23.8	13.6	9.76	4.25	2.74	1.63	0.85

Constant power discharge ratings-watts at 25°C - (Valores medios después de 5 ciclos)

F. V/Time	5MIN	10MIN	15MIN	30MIN	1H	3H	5H	10H	20H
1.60V	120	76.8	58.6	35.2	22.3	9.63	5.61	3.50	1.76
1.67V	116	74.9	57.8	34.5	22.2	9.33	5.58	3.48	1.73
1.70V	109	74.1	57.4	32.3	21.8	8.91	5.51	3.44	1.71
1.75V	110	73.9	56.9	31.4	21.4	8.70	5.46	3.41	1.67
1.80V	100	72.8	52.7	29.9	20.2	8.44	5.29	3.40	1.65
1.85V	91.0	69.1	47.8	28.0	19.0	8.19	5.12	3.36	1.58

